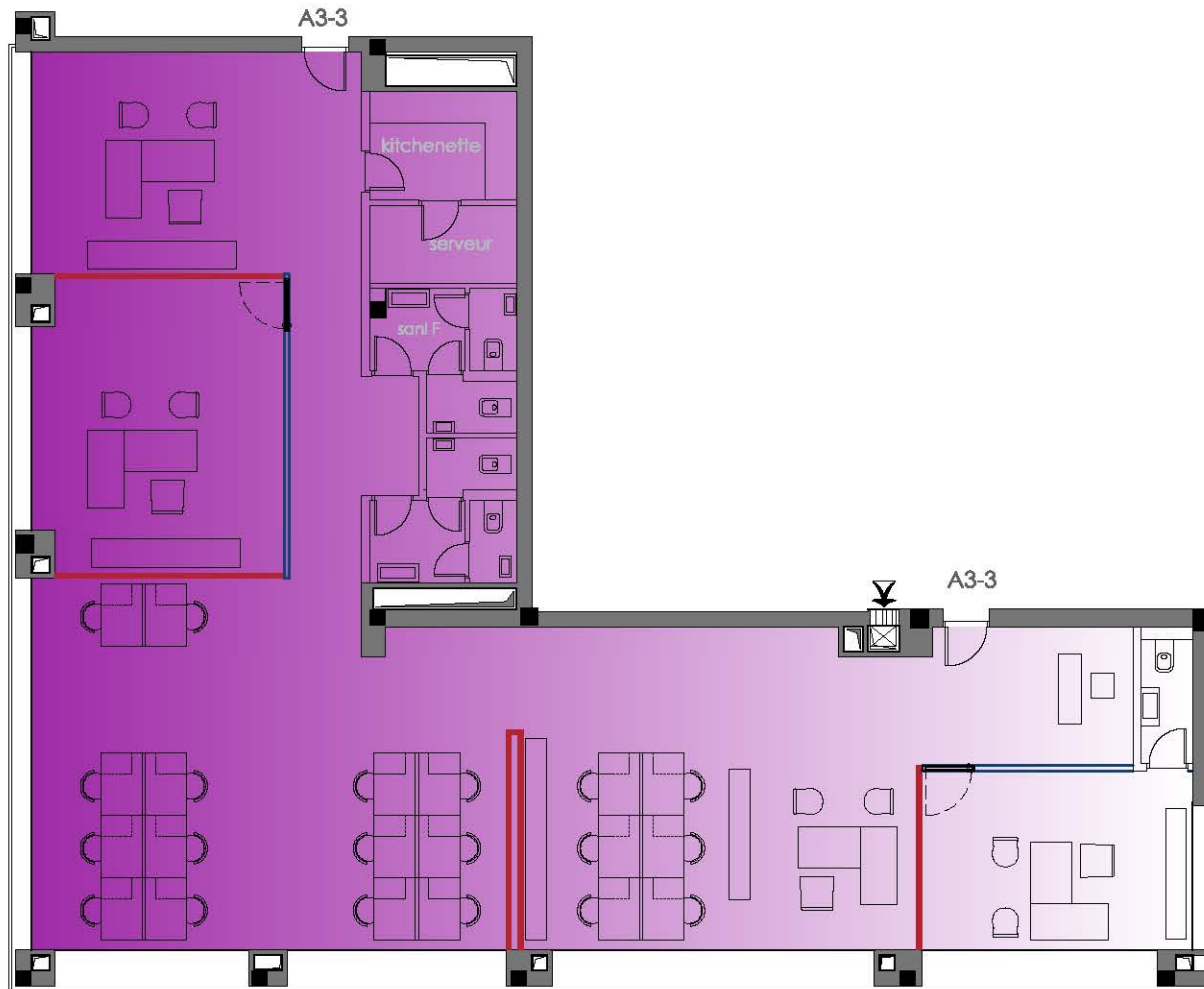


LA PERCEE VERTE

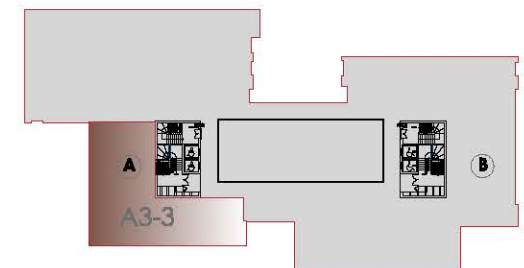
SOCIETE DE PROMOTION
IMMOBILIERE: JOUMAIRA
IMMOBILIERE

CONSTRUCTION D'UN
IMMEUBLE DE BUREAUX
AUX JARDINS DE
CARTHAGE

BLOC A
TYPE BUREAUTIQUE
3EME ETAGE
SURFACE HORS
OEUVRE : 279 m²
SURFACE
VENDABLE: 386.19m²



ACQUEREUR



SITUATION